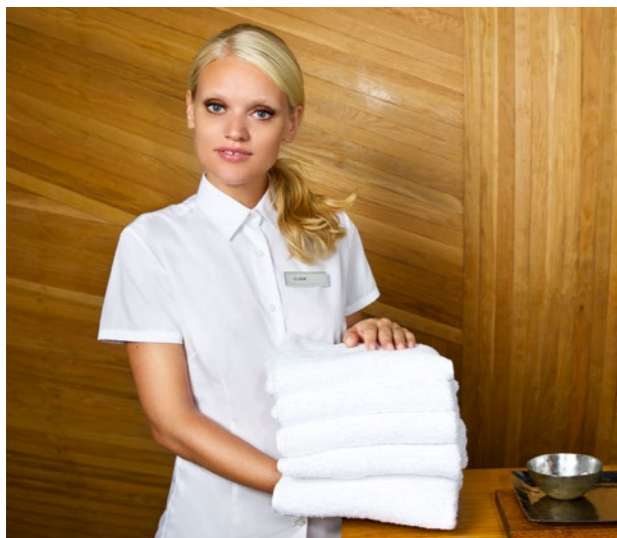




THE SHIRT CULTURE  
BE INSPIRED

# shirts

2017 B&C COLLECTION

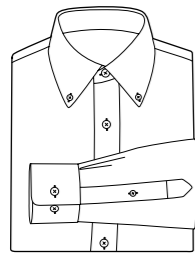


Designed to complement any **corporate uniform**, our collection of beautifully made, **contemporary business shirts** is perfect for the modern corporate environment. The 20-piece collection offers coordinating men's and women's styles in a fantastic range of **easy-care** and **easy-to-iron** fabrics.

# Which shirt suits you?

214

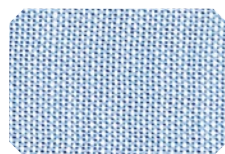
## B&C Oxford



### suiting to

- › Sales team uniforms
- › Event staff
- › Corporate uniforms
- › Reception staff
- › Retail

Oxford fabric is one of the most popular fabrics for shirts. Made of 70% cotton and 30% polyester, this cotton rich blend offers the B&C Oxford shirt a combination of quality, comfort and durability.



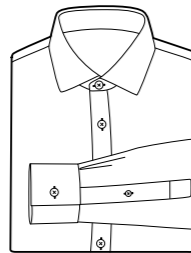
OXFORD FABRIC

- › Soft button-down collar
- › Rounded cuffs & mitre-shaped gauntlets\*
- › Easy care
- › Washable at 60°C

\* No gauntlet for her

222

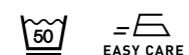
## B&C Heritage



### suiting to

- › Corporate uniforms
- › Hotel reception staff
- › Retail
- › Luxury bars & restaurants

Poplin is the most-used woven fabric for shirts. The B&C pure cotton poplin instantly adds elegance to the shirt.



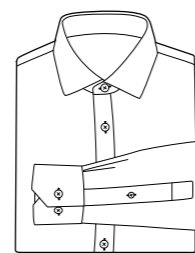
POPLIN 100% COTTON FABRIC

- › Cut-away collar
- › Straight cuffs & square-shaped gauntlets\*
- › French cuff option
- › B&C Reverso button®
- › Easy care
- › Washable at 50°C

\* Thinner gauntlets for her

228

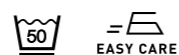
## B&C Smart



### suiting to

- › Bar & Restaurant staff
- › Corporate reception staff
- › Security staff
- › Professional staff
- › Hotel staff
- › Sales team uniforms

The principle of polycotton poplin fabric is simple. When another fibre is woven in with the cotton, you benefit from the properties of both fibres. In this case, the polyester adds extra resistance.



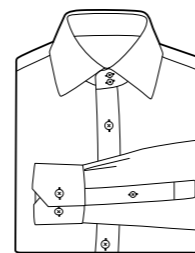
POLYCOTTON POPLIN FABRIC

- › Cut-away collar
- › Angular cuffs & square-shaped gauntlets\*
- › Easy care
- › Washable at 50°C

\* Thinner gauntlets for her

236

## B&C Black Tie



### suiting to

- › Event staff
- › Hotel reception staff
- › Professional staff
- › Bar & restaurant uniforms

B&C Stretch Poplin (cotton-elastane blend) allows a contemporary fitted cut without compromising comfort.



POPLIN COTTON STRETCH FABRIC

- › 2-button cut-away collar\*
- › Angular cuffs & square-shaped gauntlets\*\*
- › Naturally easy care
- › Stretch
- › Washable at 40°C

\* The man's short sleeved version has a 1-button cut-away collar  
\*\* Thinner gauntlets for her

242

## B&C Sharp



### suiting to

- › Corporate reception staff
- › Event staff
- › Distribution, logistics & security staff
- › Sales team uniforms
- › Bar & restaurant uniforms

Made of 100% combed cotton, thanks to its construction the B&C twill fabric is highly resistant. Its peached soft-to-touch finish adds softness to the style.



TWILL FABRIC

- › Semi cut-away collar
- › Angular cuffs & square-shaped gauntlets\*
- › Easy care
- › Washable at 50°C

\* Thinner gauntlets for her

250

## B&C Graphical Line



### suiting to

- › Bar & restaurant uniforms
- › Fashion & retail staff
- › Event staff

B&C Stretch Poplin (cotton-elastane blend) guarantees a professional look without compromising on comfort for the wearer.

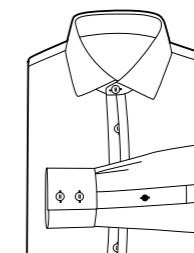


POPLIN COTTON STRETCH FABRIC

- › Fitted
- › Buttons in matching colour
- › No pleat on back panel for optimal printing and embroidery
- › 2 spare buttons

251

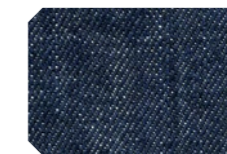
## B&C DNM Vision



### suiting to

- › Event staff
- › Hospitality staff
- › Fashion & retail staff

The 100% cotton denim twill and refined details make these iconic long-sleeved shirts the ultimate in casual chic.



DENIM TWILL FABRIC

- › Garment wash finish
- › Raw denim look
- › Decorative stitching and details
- › Tone-on-tone buttons
- › Accessory button in antique brass on left gauntlet

## Content

The shirts buyer's guide	204
B&C shirt solutions	206
Shirt fabrics	207
Collars & cuffs	208
The corporate shirt quality attributes	210
B&C-The Shirt Culture collection	214
The B&C Graphical Line	250
The B&C DNM Collection	251



All B&C Shirts exist in duo.

*So now, ladies and gentlemen, let's get dressed with B&C!*



# The shirts buyer's guide

## colour

### PICK THE RIGHT COLOUR

Here comes the nice part of the process, however, you'll want to make sure to keep the shirt uniform color as close to the company branding as possible. **From classic shades to brighter colours, B&C Shirts offer the right colour range to fit any business** whether it is for a corporate sales team, a hospitality staff, a mass retail staff, a beauty business crew.... When picking your logo or embroidery, make sure to ensure high contrast between the logo and garment. Whatever you decided to choose, make sure the embroidery or logo is **easily readable**, especially from a distance.

## branding

### WHAT DECORATION TECHNIQUE?

**Embroidery** may look best for a small logo on the front of the shirt. If you want a larger or all-over design, **screen printing** will be the best option. One option is to embroider the employee's name on the front of the shirt and do a large, screen printed logo on the back. An embroidered logo on the front looks nice as well. In any case, **B&C Shirts are designed to be decorated** and will give you enhanced printability thanks to their high quality fabrics.

## sizing

### HOW TO SELECT YOUR SIZE?

Uniform sizes may be different than "normal" clothes sizes. In order to get a proper uniform fit, you sometimes need to increase the "normal" size by one. **B&C Shirts are true to size**, you can order the normal clothes size and be sure your team and staff will look professional in any business situation. We have designed our shirts with a **regular fit** ensuring they suit a **wide range of body shapes** and our **wide size offer** gives you the opportunity to have a full team uniforms that is consistent in look, cuts and colours.

## fabric

### WHAT TYPE OF FABRIC DO YOU NEED?

Depending on how much physical activity your employees will be doing or the temperature they are working in, consider the kind of fabric that is the most suitable for their uniforms.

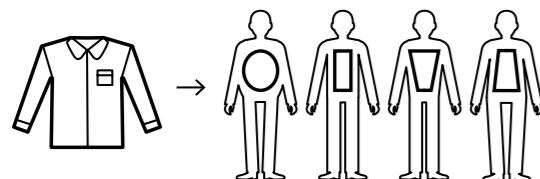
Are they outside? If they are and the weather gets warm, cotton may be a more suitable fabric. **Polyester/cotton blend** may be more **durable** and may be better for **indoor**, air-conditioned environments. **Elastane** offer also **added comfort to a more fitted shirt cut**. Also, consider your employees and their busy schedules; make sure their shirts are easy to wash. All B&C Shirts are **easy care treated**.

## visibility

### BE CREATIVE

Do you have an important promotion or event coming up? Screen print a design with information about it on the back of your team' shirts. Consider changing up your employee's uniforms based on seasons, such as darker shades for winter and a brighter color and logo for summer. Changing up uniforms can add interest to your business and catch customer's eyes. **Think about your employee' shirt uniforms as a support of choice for your business visibility.**

*“Give your team the right shirt and they'll conquer the world.”*



# The B&C shirt solutions

B&C has developed two ingenious solutions that bring B&C-The Shirt Culture wearer more self-confidence in any situation: the **B&C Tie-Fix**® and the **B&C Reverso button**®.

## B&C Tie-Fix®

*Do you want your tie to stay in place?  
Do you not see a tie pin as a discreet  
solution to your problem?*

B&C has the solution with its B&C Tie-Fix® in the same fabric as your shirt. It will hold your tie in place - discreetly. With this invisible solution, you can focus on your work while the B&C Tie-Fix® takes care of your tie.



> Available on B&C Oxford, B&C Heritage and B&C Sharp for men, in LSL & SSL versions

## B&C Reverso button®

*Need to transform your corporate  
shirt into a formal and  
high class one in seconds?*

Don't worry, B&C has the solution. Thanks to the B&C Reverso button®, transform to a kissing French cuff from a straight classical cuff.

### HOW TO PROCEED?

Take your single button and pass it through its own hole. It will now be on the inside of the cuff. Then, pass the button into the other side of the cuff (kissing-style).



> Available on B&C Heritage LSL /men

Watch the videos on our B&C Collection Youtube Channel

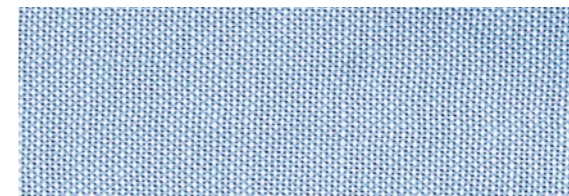


# 5 fabrics

quality      comfort      ease of care

## oxford

OXFORD FABRIC



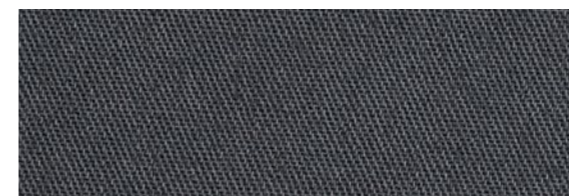
Oxford is an emblematic fabric thanks to its honeycomb construction, where warp and weft threads cross each other in pairs. Made of 70% cotton and 30% polyester, this cotton rich blend makes the B&C Oxford shirt a perfect combination of quality, comfort and durability.

> B&C Oxford



## twill

TWILL FABRIC



B&C Twill fabric made of 100% combed cotton is very resistant even though it's pure cotton. This is thanks to the fabric's construction. To add more comfort and softness, B&C offers a peached soft-to-touch finish. The result: shirts are qualitative, durable and highly comfortable.

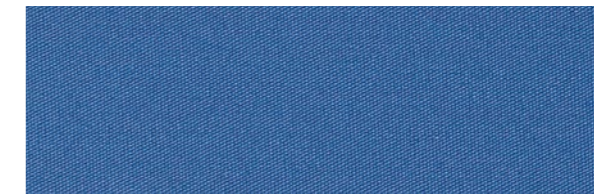
> B&C Sharp



## poplin

*Poplin is the most commonly used woven fabric for shirts. It is renowned for its silky surface, its pure appearance and the comfort it brings. Here are the 3 types of Poplin carefully chosen to meet the corporate demand for premium quality.*

POPLIN 100% COTTON FABRIC



The principle: a fine yarn running one way with a thicker one interweaving it. The B&C poplin made of 100% cotton has a fine quality bringing pure elegance to the B&C shirts.

> B&C Heritage



POLYCOTTON POPLIN FABRIC



Here the polyester will bring both durability and resistance. Made of 65% polyester and 35% cotton, this blend makes the B&C shirts wrinkle resistant, durable and gives them strong colour fastness.

> B&C Smart



POPLIN COTTON STRETCH FABRIC



B&C poplin cotton elastane is made of 97% combed cotton and 3% elastane, creating stretch. This specific combination allows B&C to create a line of shirts with more fitted cuts without compromising comfort.

> B&C Black Tie





# The collars

There are zillions of collars but you only need to know 3: the button-down collar, exclusively dedicated to oxford styles, the cut-away collar for a more contemporary elegant look and the semi cut-away collar, a more traditional variation of the cut-away collar.

## MEN



### button-down collar

Buttons were added to traditional collars by polo players to stop their collars flapping in their faces. Off the polo field, the button-down collar helps to hold ties in place and keep the collar neat when worn under blazers and knits.

- > B&C Oxford LSL /men
- > B&C Oxford SSL /men



### 2-button cut-away collar

This is a 'must have' for any trendy shirt wardrobe. This collar can also be worn with a tuxedo as it allows the entire bow tie to be visible. It has a higher collar band due to the double buttons.

- > B&C Black Tie LSL /men



### 1-button cut-away collar

It adds a dressier touch to a suit. It looks great with a button or two undone under a sharp blazer. If you opt for a tie, this collar will subtly draw attention to it.

- > B&C Heritage LSL /men
- > B&C Heritage SSL /men
- > B&C Smart LSL /men
- > B&C Smart SSL /men
- > B&C Black Tie SSL /men



### semi cut-away collar

A more conventional variation of the cut-away collar. Also known as the classic, it is timelessly elegant. It makes any tie stand "proud" and gives you a cool and confident look, whether your top button is done up or not.

- > B&C Sharp LSL /men
- > B&C Sharp SSL /men

## WOMEN



### soft feminine collar

The B&C soft feminine collar is simple, featuring pure shapes, it is trans-seasonal. Made of high-quality fabrics, it is perfect for achieving an immaculate look.

- > B&C Oxford LSL /women
- > B&C Oxford SSL /women
- > B&C Heritage LSL /women
- > B&C Heritage SSL /women
- > B&C Smart LSL /women
- > B&C Smart SSL /women
- > B&C Black Tie LSL /women
- > B&C Black Tie SSL /women
- > B&C Sharp LSL /women
- > B&C Sharp SSL /women

*“The collar is the most distinguishing and fashion-sensitive feature of any shirt.”*

# The cuffs

Choosing the finest fabric is only the starting point of what makes our shirts special. The care and attention that goes into every stitch is matched by B&C continually striving for perfection in the cutting and design of our shirts. Cuffs are one of the key features not only in determining how dressy a shirt is, but also in establishing personal style. To be sure to have a faultless choice you only need to remember 3 shapes: rounded, angular and straight.

## LONG SLEEVES



B&C long sleeved shirts have convertible 2-button cuffs with an additional buttonhole to transform them into French cuffs (Kissing or Barrel-style).



### rounded cuff corners

Rounded cuff corners and mitre-shaped gauntlets follow the traditions of the original Oxford shirt.

- > B&C Oxford LSL /women
- > B&C Oxford LSL /men



### angular cuff corners

Angular cuff corners perfectly match contemporary corporate style. This modern shape enhances the majority of our Long Sleeved shirt styles.

- > B&C Smart LSL /women
- > B&C Smart LSL /men
- > B&C Black Tie LSL /women
- > B&C Black Tie LSL /men
- > B&C Sharp LSL /women
- > B&C Sharp LSL /men

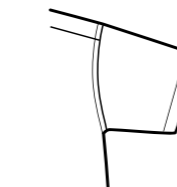
## SHORT SLEEVES



### narrow cuffs

Oxford's short sleeved cuffs are narrowed to follow the Oxford tradition. They enhance your style with a chic sporty look.

- > B&C Oxford SSL /women
- > B&C Oxford SSL /men



### folded sleeves Hem

This folded finish always maintains an elegant shape.

- > B&C Heritage SSL /men
- > B&C Heritage SSL /women
- > B&C Smart SSL /men
- > B&C Smart SSL /women
- > B&C Black Tie SSL /men
- > B&C Black Tie SSL /women
- > B&C Sharp SSL /men
- > B&C Sharp SSL /women

NOTE: the Black Tie SSL /men and the B&C Sharp SSL /men have double overstitched folded sleeve hem.



## The B&C Heritage shirt

In addition to the extra buttonhole enabling cufflink use, our straight cuff design features the **B&C Reverso button®**. This innovative system allows you to transform, in seconds and without cufflinks, your classic straight cuffs into **stylish French cuffs** (see p. 206).

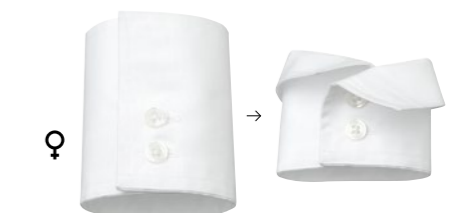


### man straight cuff corners

B&C Heritage's cuffs straight corners add sophistication to the shape.

- > B&C Heritage LSL /men

Inspired by the same high-end look idea, the women's version can also be transformed into a feminine French cuff by folding them.



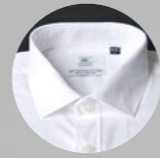
### woman long 2-button straight cuff corners

B&C Heritage's long 2-button straight cuff corners add femininity and sophistication to the shape.

- > B&C Heritage LSL /women

**1**  
**CONTEMPORARY FIT**

Perfect balance between contemporary fit and corporate. Requirements in terms of measurements: 4 fits: regular, adjusted, medium and fitted.



**2**  
**ALL B&C COLLARS** are made of 3 layers to help them keep their shape: 2 layers of fabric and between them an interlining. Non-removable bones are integrated in the collar to ensure you never lose them.



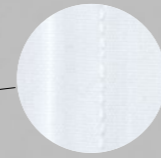
**3**  
**INVISIBLE BUT CRUCIAL QUALITY: THE LAP SEAMS**

Lap seams are inside the shirt but they play an important role: comfort enhancement, durability and high-end quality perception. Each B&C mans' shirt has this finish providing quality and a feeling of comfort to the wearer.

# 08

## The corporate shirt's quality attributes

DETAILS THAT MAKE THE DIFFERENCE



**4**  
**6 STITCHES PER CENTIMETER**

Count the number of stitches per centimeter: the more you have the better it is. B&C shirts boast 6 stitches per centimeter, as you cannot accurately achieve more than 6 or 7.



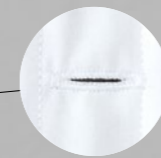
**5**  
**DURABLE BUTTONS**  
B&C high quality polyester mother-of-pearl buttons are intensively wash resistant, making B&C shirts perfect for everyday wear. B&C buttons are cross-stitched, enhancing the perceived quality and ensuring you will never lose one.



**7**  
**CUFFS**  
3 shapes: the round-shaped exclusively for Oxford cuts, the straight-shaped for a more sophisticated silhouette and the angular-shaped cuffs for a contemporary corporate style.  
B&C long sleeve shirts have convertible 2-button cuffs with an additional buttonhole to better fit any wrist shape.



**6**  
**CLEVERLY LOCATED SPARE BUTTONS**  
Each shirt comes with spare buttons sewn onto the button placket ensuring you don't snag them when ironing.



**8**  
**HORIZONTAL LAST BUTTONHOLE**  
to offer a reduced likelihood of the button pulling out.

THE SHIRT CULTURE  
BE INSPIRED



Perfect business credentials

The perfectly cut shirt has long been a corporate staple from the reception desk to the boardroom, that's why each B&C-The Shirt Culture style has been designed to bring elegance to teams in a range of work environments.

The timeless B&C Oxford will add a touch of classic style to any sales or corporate team, while the B&C Heritage with its exclusive details will ensure the elegance of hospitality staff from hotels to events. The B&C Smart and B&C Sharp were made for the comfort of professional staff in healthcare, hospitality, mass retail and beyond. The B&C Black Tie with its slim fit is perfect when teams need to be comfortable but trendy, in hair salons or bars for example.

All available as complementary DUO styles for men and women, the B&C-The Shirt Culture styles are all designed to add impeccable business style to your teams.

BE INSPIRED. EXPLORE NEW BUSINESS OPPORTUNITIES



boundless business opportunities  
be inspired



> To find what you need for your business, go to the Business Opportunities section <  
at the front of this catalogue, or visit our website [www.bc-fashion.eu](http://www.bc-fashion.eu)



THE SHIRT CULTURE  
BE INSPIRED

# B&C OXFORD LINE BUSINESS SHIRTS

Everyone working in the corporate business needs a classic Oxford shirt in its wardrobe. Designed to perform in modern business environment, the **B&C Oxford shirt** is a timeless classic alive. With a classic fit, this cotton rich easy-to-iron shirt is a workday essential.

## Cotton rich fabric benefits

**100% COMFORT**  
THANKS TO COTTON

**EXTRA RESITANCE**  
THANKS TO ADDED POLYESTER

Oxford fabric is one of the most popular fabrics for corporate shirts. Made of **70% cotton and 30% polyester**, this cotton rich blend makes the B&C Oxford shirt a perfect combination of **quality, comfort and durability**.

Its structure makes it naturally **resistant to wrinkles**.

The **easy care treatment** makes it effortless to maintain whilst the polycotton composition ensures durability.

## “What’s the right corporate look?”

It’s important to keep a professional image, particularly in a corporate or office environment. The way your employees dress can improve **the perception of service and quality** and create a confident environment in the workplace too. **B&C Oxford shirts** are made of high quality fabric to guarantee **day-long comfort** and a **crisp professional look**.

**OXFORD**  
70% COMBED COTTON  
30% POLYESTER  
135 G/M<sup>2</sup>  
WASHABLE AT 60°C



**EXTENDED SIZE RANGE UP TO 6XL FOR WOMEN & MEN.**  
Available in **DUO** styles, both in long and short sleeved versions.



*“Like a white T-shirt or a navy blazer, the Oxford cloth dress shirt is part of the uniform. You have to have it.”*

**SCOTT STERNBERG . DESIGNER**

# B&C OXFORD, THE CORPORATE MUST-HAVE



**BE INSPIRED**

Whether you're looking for the perfect complement to your day-to-day corporate uniforms in any industry, your reception staff or your corporate events team uniforms we have it covered.

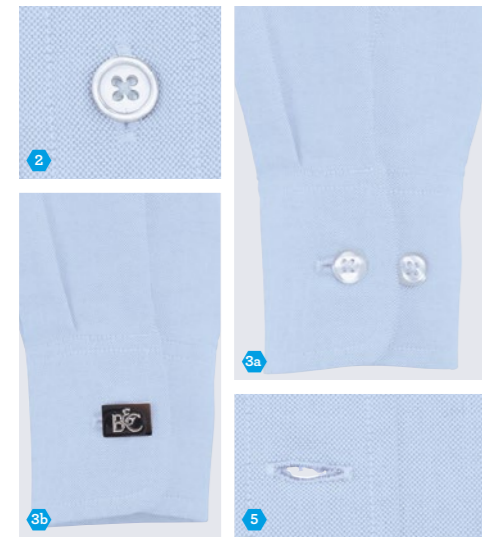
The **elegance and quality** of the **B&C Oxford line**, will give your teams a professional look in any **business situation**. Your employees will feel good about how they look, giving them the confidence to deliver that perfect first impression.

SW 003  
**B&C Oxford LSL /women**

→ OXFORD FABRIC

70% combed cotton - 30% polyester  
135 g/m<sup>2</sup>  
XS - S - M - L - XL - XXL - XXXL - 4XL - 5XL - 6XL  
1 pc/pack & 10 pcs/carton  
🧺 ⚡ 🌞 🧺 📦

ADJUSTED FIT



- 
- Soft feminine collar
  - Cross stitched mother-of-pearl effect buttons
  - 2-button adjustable cuffs
    - Rounded cuffs
    - Additional cufflink buttonholes
  - Darts at bustline & back panel for a feminine shape
  - Horizontal last buttonhole
- Also: Cotton rich polycotton Oxford fabric

DUO  
CONCEPT



SM 001  
**B&C Oxford LSL /men**

→ OXFORD FABRIC

70% combed cotton - 30% polyester  
135 g/m<sup>2</sup>  
Size S - M - L - XL - XXL - XXXL - 4XL - 5XL - 6XL  
Collar 37/38 39/40 41/42 43/44 45/46 47/48 49/50 51 52 cm  
14,5/15 15,5 16,5 17,5 18 19 19,5 20 21 ins  
1 pc/pack & 10 pcs/carton  
🧺 ⚡ 🌞 🧺 📦

REGULAR FIT



- 
- Soft button-down collar
  - Cross stitched mother-of-pearl effect buttons
  - 2-button adjustable cuffs
    - Rounded cuffs & mitre-shaped gauntlets
    - Additional cufflink buttonholes
  - The exclusive B&C Tie-Fix®
  - Back yoke with 2 overstitched side pleats
  - Left chest pocket
  - Inside lap seams for perfect finish
  - Horizontal last buttonhole
  - Mitre-shaped bottom hem side reinforcement
- Also: Curved bottom hem  
Cotton rich polycotton Oxford fabric

DUO  
CONCEPT

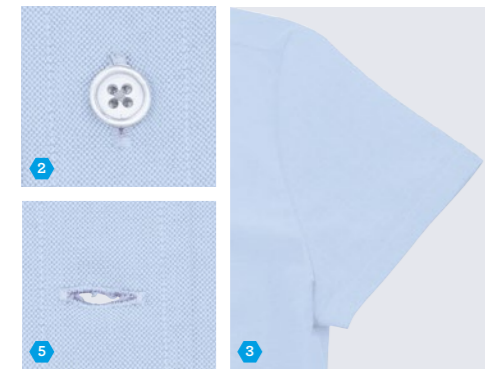


SW 004  
**B&C Oxford SSL /women**

→ OXFORD FABRIC

70% combed cotton - 30% polyester  
135 g/m<sup>2</sup>  
XS - S - M - L - XL - XXL - XXXL - 4XL - 5XL - 6XL  
1 pc/pack & 10 pcs/carton

ADJUSTED FIT



1. Soft feminine collar
  2. Cross stitched mother-of-pearl effect buttons
  3. Short sleeves with narrow cuffs
  4. Darts at bustline & back panel for a feminine shape
  5. Horizontal last buttonhole
- Also: Cotton rich polycotton Oxford fabric



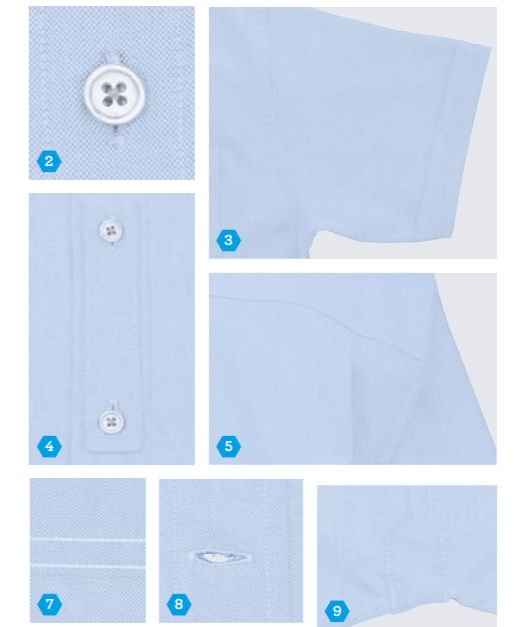
DUQ  
CONCEPT

SM 002  
**B&C Oxford SSL /men**

→ OXFORD FABRIC

70% combed cotton - 30% polyester  
135 g/m<sup>2</sup>  
Size S - M - L - XL - XXL - XXXL - 4XL - 5XL - 6XL  
Collar 37/38 39/40 41/42 43/44 45/46 47/48 49/50 51 52 cm  
14,5/15 15,5 16,5 17,5 18 19 19,5 20 21 ins  
1 pc/pack & 10 pcs/carton

REGULAR FIT



1. Soft button-down collar
  2. Cross stitched mother-of-pearl effect buttons
  3. Short sleeves with narrow cuffs
  4. The exclusive B&C Tie-Fix®
  5. Back yoke with 2 overstitched side pleats
  6. Left chest pocket
  7. Inside lap seams for perfect finish
  8. Horizontal last buttonhole
  9. Mitre-shaped bottom hem side reinforcements
- Also: Curved bottom hem  
Cotton rich polycotton Oxford fabric

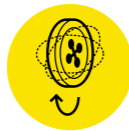


DUQ  
CONCEPT

**B&C Heritage,  
the boardroom's player**



100% COTTON, 100% ELEGANCE, 100% WEARER COMFORT



Discover the B&C shirt solutions on p.206



**THE SHIRT CULTURE**  
BE INSPIRED

**B&C Heritage line  
Business  
comfort**

Poplin is the most-used woven fabric for shirts. Effortlessly stylish, the **B&C Heritage line** is made of **pure cotton poplin** that instantly adds elegance to the shirt. A premium range of shirts tailored from a superb 100% superfine cotton, easy iron fabric.

**Fabric benefits**

**100% ELEGANCE**

**100% COMFORT**

Poplin is usually used for the most **formal** shirts. **100% cotton** make it the most comfortable ones. This fabric weave offers a **smooth and flat surface** that gives extra comfort for the wearer. Its structure makes this fabric **elegant and professional**.

B&C Heritage shirts are made of 100% **combed** cotton high quality fabric and are **easy care treated**.

**POPLIN**  
100% COMBED COTTON  
120 G/M<sup>2</sup>  
WASHABLE AT 50°C

**LARGE SIZE RANGE FROM XS TO 4XL.**  
Available in **DUO** styles,  
both in long and short sleeved versions.

**Wearing poplin**

**THE ESSENTIAL DRESS SHIRT FABRIC**

Poplin is the most **breathable** fabric, B&C Heritage shirts are therefore ideal worn under a suit or on warmer weather and suitable for **any formal occasions**. From hotels to events, from luxury bars & restaurants to trendy retail shops, the **B&C Heritage line** will always ensure elegance of your staff.

**B&C REVERSO BUTTON®**



See page 206

SW P43  
**B&C Heritage LSL /women**

→ **POPLIN 100% COTTON FABRIC**

100% combed cotton  
120 g/m<sup>2</sup> (white) - 125 g/m<sup>2</sup> (colour)  
XS - S - M - L - XL - XXL - XXXL - 4XL  
1 pc/pack & 10 pcs/carton  
🧺 ⚡ 🔄 📏 🇵🇷

**ADJUSTED FIT**



- 
- Soft feminine collar
  - Cross stitched mother-of-pearl effect buttons
  - a. Straight cuffs & thin square-shaped gauntlets  
b. French cuff option
  - Darts at bustline & back panel for a feminine shape
  - Horizontal last buttonhole
- Also: Fine 100% poplin cotton



**B&C Heritage,  
business comfort**

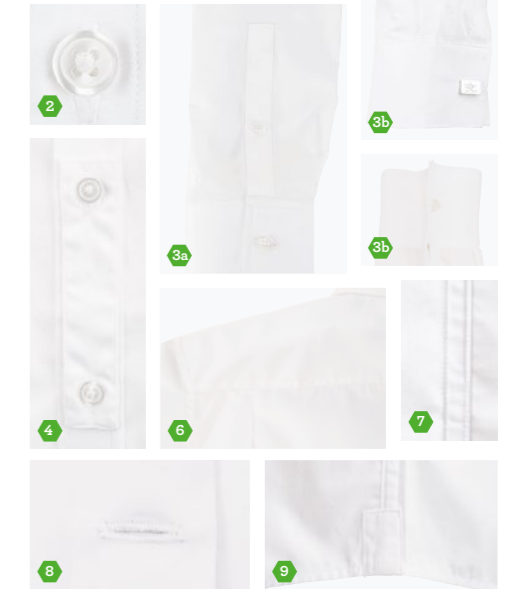
**DUO  
CONCEPT**

SM P41  
**B&C Heritage LSL /men**

→ **POPLIN 100% COTTON FABRIC**

100% combed cotton  
120 g/m<sup>2</sup> (white) - 125 g/m<sup>2</sup> (colour)  
Size S - M - L - XL - XXL - XXXL - 4XL  
Collar 37/38 39/40 41/42 43/44 45/46 47/48 49/50 cm  
14,5/15 15,5 16/16,5 17/17,5 18 18,5/19 19,5 ins  
1 pc/pack & 10 pcs/carton  
🧺 ⚡ 🔄 📏 🇵🇷

**REGULAR FIT**



- 
- Cut-away collar
  - Cross stitched mother-of-pearl effect buttons
  - a. Straight cuffs & square-shaped gauntlets  
b. French cuff option through:  
Additional cufflink buttonholes  
or B&C REVERSO button® (see p. 206)
  - The exclusive B&C Tie-Fix®
  - Left chest pocket
  - Back yoke with 2 overstitched side pleats
  - Inside lap seams for perfect finish
  - Horizontal last buttonhole
  - Square-shaped bottom hem side reinforcement
- Also: Curved bottom hem  
Fine 100% poplin cotton



Thanks to the B&C Reverso button®, transform your corporate shirt into a formal and high class one in seconds. From a straight classical cuff, to a kissing French cuff effect simply by passing the button through to the other side of the cuff (check the metamorphosis process p.206). You are now ready for your unexpected cocktail!

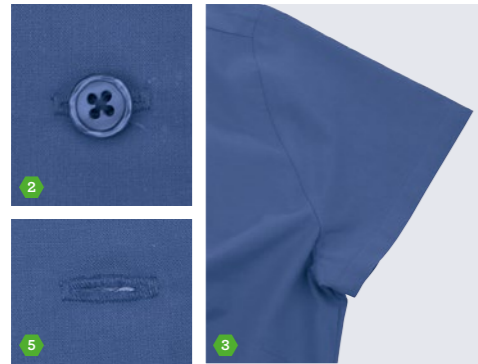
**DUO  
CONCEPT**

SW P44  
**B&C Heritage SSL /women**

→ **POPLIN 100% COTTON FABRIC**

100% combed cotton  
120 g/m<sup>2</sup> (white) - 125 g/m<sup>2</sup> (colour)  
XS - S - M - L - XL - XXL - XXXL - 4XL  
1 pc/pack & 10 pcs/carton  
🧺 ⚡ 🌀 📏 🇵🇷

**ADJUSTED FIT**



- 
- Soft feminine collar
  - Cross stitched mother-of-pearl effect buttons
  - Folded sleeve hem
  - Darts at bustline & back panel for a feminine shape
  - Horizontal last buttonhole
- Also: Fine 100% poplin cotton



DUO  
CONCEPT

SM P42  
**B&C Heritage SSL /men**

→ **POPLIN 100% COTTON FABRIC**

100% combed cotton  
120 g/m<sup>2</sup> (white) - 125 g/m<sup>2</sup> (colour)  
Size S - M - L - XL - XXL - XXXL - 4XL  
Collar 37/38 39/40 41/42 43/44 45/46 47/48 49/50 cm  
14,5/15 15,5 16/16,5 17/17,5 18 18,5/19 19,5 ins  
1 pc/pack & 10 pcs/carton  
🧺 ⚡ 🌀 📏 🇵🇷

**REGULAR FIT**



- 
- Cut-away collar
  - Cross stitched mother-of-pearl effect buttons
  - Folded sleeve hem
  - The exclusive B&C Tie-Fix®
  - Left chest pocket
  - Back yoke with 2 overstitched side pleats
  - Inside lap seams for perfect finish
  - Horizontal last buttonhole
  - Square-shaped bottom hem reinforcement
- Also: Curved bottom hem  
Fine 100% poplin cotton



DUO  
CONCEPT



## B&C SMART LINE

# YOUR EVERYDAY CORPORATE SHIRT

Ready to enhance your brand everyday, **B&C Smart line** offers the **most versatile poplin shirts** thanks to its qualitative **polycotton blend** and its comfortable yet modern fit.

### Fabric benefits

**100% RESISTANT**  
THANKS TO POLYESTER

**100% SHIRT**  
POPLIN BEING THE MOST POPULAR  
FABRIC FOR SHIRTS

**100% DAY-LONG PERFECT LOOK**  
THANKS TO EASY CARE TREATMENT –  
MAKING WRINKLE RESISTANT

Made of 65% polyester and 35% **combed** cotton, **B&C Smart shirts** delivers **smart looking** (Poplin) and **enhanced durability**. This polycotton poplin is intensively **wash-resistant** and **easy to maintain** thanks to its easy care treatment.

***B&C Smart,  
the versatility  
at its best***

**POLYCOTTON POPLIN**  
65% POLYESTER  
35% COMBED COTTON  
115 G/M<sup>2</sup>  
WASHABLE AT 50°C

**LARGE SIZE RANGE FROM XS TO 4XL.**

Available in *DUO* styles, both in long and short sleeved versions.



"NONE OF US  
IS AS SMART AS ALL OF US"  
JAPANESE PROVERB

**B&C SMART,**  
100% SHIRT,  
100% RESISTANT,  
100% EASY CARE



Be smart, thanks to their double fabric benefit -style and resistance- the **B&C Smart shirts** deliver an **easy-care and a day-long good looking uniform** to your employees. From sales team, to hotel reception staff, from security staff to professional wear business team, B&C Smart line is the perfect choice to make your business grow.

BE INSPIRED



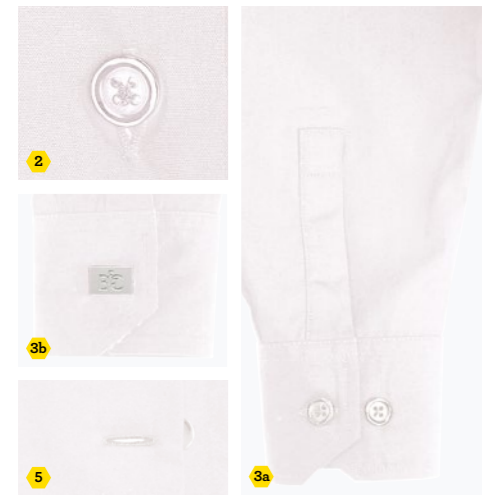


SW P63  
**B&C Smart LSL /women**

→ **POLYCOTTON POPLIN FABRIC**

65% polyester - 35% combed cotton  
115 g/m<sup>2</sup>  
XS - S - M - L - XL - XXL - XXXL - 4XL  
1 pc/pack & 10 pcs/carton  
🧺 🧺 🧺 🧺 🧺

**ADJUSTED FIT**



- 
- Soft feminine collar
  - Cross stitched mother-of-pearl effect buttons
  - 2-button adjustable cuffs
    - Angular cuffs & thin square-shaped gauntlets
    - Additional cufflink buttonholes
  - Darts at bustline & back panel for a feminine shape
  - Horizontal last buttonhole
- Also: Quality polycotton poplin



DU♂  
CONCEPT

SM P61  
**B&C Smart LSL /men**

→ **POLYCOTTON POPLIN FABRIC**

65% polyester - 35% combed cotton  
115 g/m<sup>2</sup>  
Size S - M - L - XL - XXL - XXXL - 4XL  
Collar 37/38 39/40 41/42 43/44 45/46 47/48 49/50 cm  
14,5/15 15,5 16/16,5 17/17,5 18 18,5/19 19,5 ins  
1 pc/pack & 10 pcs/carton  
🧺 🧺 🧺 🧺 🧺

**REGULAR FIT**



- 
- Cut-away collar
  - Cross stitched mother-of-pearl effect buttons
  - 2-button adjustable cuffs
    - Angular cuffs & square-shaped gauntlets
    - Additional cufflink buttonholes
  - Left chest pocket
  - Back yoke with 2 overstitched side pleats
  - Inside lap seams for perfect finish
  - Horizontal last buttonhole
- Also: Curved bottom hem  
Quality polycotton poplin



DU♂  
CONCEPT

SW P64  
**B&C Smart SSL /women**

→ **POLYCOTTON POPLIN FABRIC**

65% polyester - 35% combed cotton  
115 g/m<sup>2</sup>  
XS - S - M - L - XL - XXL - XXXL - 4XL  
1 pc/pack & 10 pcs/carton  
🧺 ⚡ 🔄 📏 Ⓟ

**ADJUSTED FIT**



- 
- Soft feminine collar
  - Cross stitched mother-of-pearl effect buttons
  - Folded sleeve hem
  - Darts at bustline & back panel for a feminine shape
  - Horizontal last buttonhole
- Also: Quality polycotton poplin



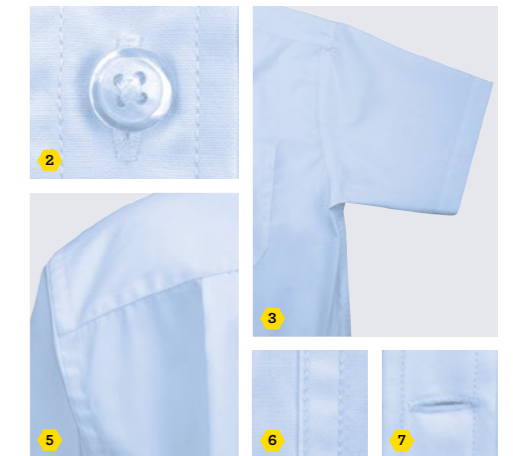
DUO  
CONCEPT

SM P62  
**B&C Smart SSL /men**

→ **POLYCOTTON POPLIN FABRIC**

65% polyester - 35% combed cotton  
115 g/m<sup>2</sup>  
Size S - M - L - XL - XXL - XXXL - 4XL  
Collar 37/38 39/40 41/42 43/44 45/46 47/48 49/50 cm  
14,5/15 15,5 16/16,5 17/17,5 18 18,5/19 19,5 ins  
1 pc/pack & 10 pcs/carton  
🧺 ⚡ 🔄 📏 Ⓟ

**REGULAR FIT**



- 
- Cut-away collar
  - Cross stitched mother-of-pearl effect buttons
  - Folded sleeve hem
  - Left chest pocket
  - Back yoke with 2 overstitched side pleats
  - Inside lap seams for perfect finish
  - Horizontal last buttonhole
- Also: Curved bottom hem  
Quality polycotton poplin



DUO  
CONCEPT



My B&C Black Tie in the latest ephemeral restaurant.

B&C Black Tie LSL /men  
P.239



My B&C Black Tie, just extremely modern.

B&C Black Tie LSL /men  
P.239



My B&C Black Tie. Fitted look. Freedom of movement.

B&C Black Tie LSL /men & women  
P.238 & 239



My B&C Black Tie going out to cinema.

B&C Black Tie LSL /men & women  
P.238 & 239

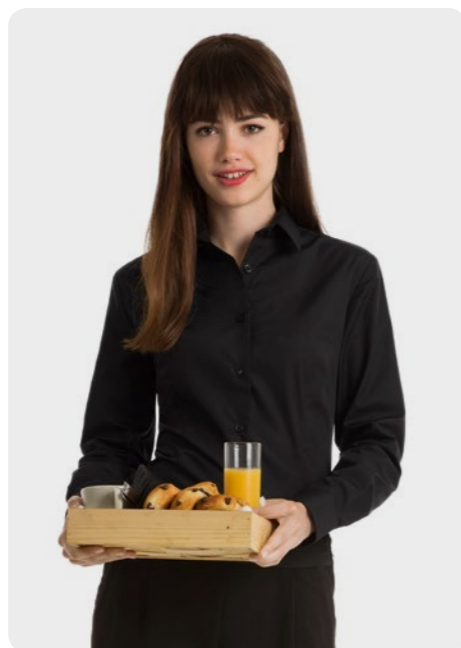


My B&C Black Tie making my customer a gorgeous silhouette.

B&C Black Tie SSL /women  
P.240



My B&C Black Tie in the new trendy pop-up retail store.



My B&C Black Tie bringing me my breakfast.

B&C Black Tie LSL /women  
P.238



My B&C Black Tie on my pretty blond girl-friend.

B&C Black Tie SSL /men & women  
P.240 & 241



# B&C BLACK TIE LINE

# MODERN COMFORT

B&C Black Tie shirts offer a contemporary silhouette with clean lines and a sleek fit. This **stretch fabric fitted shirt** is truly the perfect addition to a professional wardrobe when teams need to be comfortable but trendy in bars & restaurants, hotels, on events or beauty salons. **B&C Black Tie line** offer a new direction for **modern corporate clothing**.

## Fabric benefits

**100% TRENDY**  
THANKS TO ITS FITTED CUT

**100% FREEDOM OF MOVEMENT**  
THANKS TO ADDED ELASTANE

**100% MY FAVOURITE MODERN SHIRT**

This **crease resistant poplin** shirt is made of a **cotton-elastane blend** that allows a **fitted cut** keeping great **freedom of movement** and **comfort**.

**POPLIN COTTON STRETCH**  
97% COMBED COTTON - 3% ELASTANE  
135 G/M<sup>2</sup>  
WASHABLE AT 40°C



**LARGE SIZE RANGE**  
**FROM XS TO 4XL.**  
Available in **DUO** styles,  
both in **long and short**  
sleeved versions.

## Wearing B&C Black Tie

**100% Modern?** It is not only a fitted cut, it also showcases the most **contemporary collar**: the **cut-away shape**. Its slightly shorter body length enable you to wear it **tucked in or out**.

For women, this impeccably crafted shirt delivers a **flattering and feminine silhouette**.

SW P23  
**B&C Black Tie LSL /women**

→ **POPLIN COTTON STRETCH FABRIC**

97% combed cotton - 3% elastane  
135 g/m<sup>2</sup>  
XS - S - M - L - XL - XXL - XXXL - 4XL  
1 pc/pack & 10 pcs/carton  
🧺 🧺 🧺 🧺 🧺

**FITTED** **STRETCH**



- 
- Soft feminine collar
  - Cross stitched mother-of-pearl effect buttons
  - 2-button adjustable cuffs
    - Angular cuffs & thin square-shaped gauntlets
    - Additional cufflink buttonholes
  - Darts at bustline & back panel for a feminine shape
  - Horizontal last buttonhole
- Also: Stretch poplin



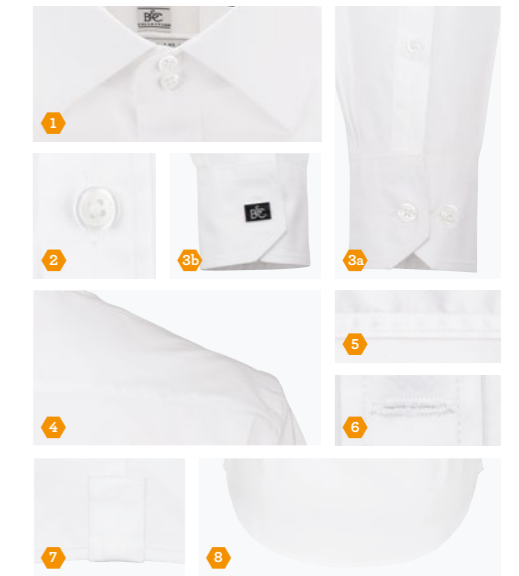
DUO  
CONCEPT

SM P21  
**B&C Black Tie LSL /men**

→ **POPLIN COTTON STRETCH FABRIC**

97% combed cotton - 3% elastane  
135 g/m<sup>2</sup>  
Size S - M - L - XL - XXL - XXXL - 4XL  
Collar 37/38 39/40 41/42 43/44 45/46 47/48 49/50 cm  
14,5/15 15,5 16/16,5 17/17,5 18 18,5/19 19,5 ins  
1 pc/pack & 10 pcs/carton  
🧺 🧺 🧺 🧺 🧺

**MEDIUM FIT** **STRETCH**



- 
- 2-button cut-away collar
  - Cross stitched mother-of-pearl effect buttons
  - 2-button adjustable cuffs
    - Angular cuffs & square-shaped gauntlets
    - Additional cufflink buttonholes
  - Short modern back yoke
  - Inside lap seams for perfect finish
  - Horizontal last buttonhole
  - Square-shaped bottom hem side reinforcement
  - Curved bottom hem – shorter length – can be worn untucked
- Also: Stretch poplin  
Darts at back panel



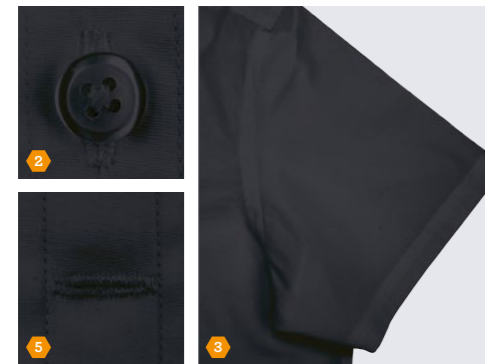
DUO  
CONCEPT

SW P24  
**B&C Black Tie SSL /women**

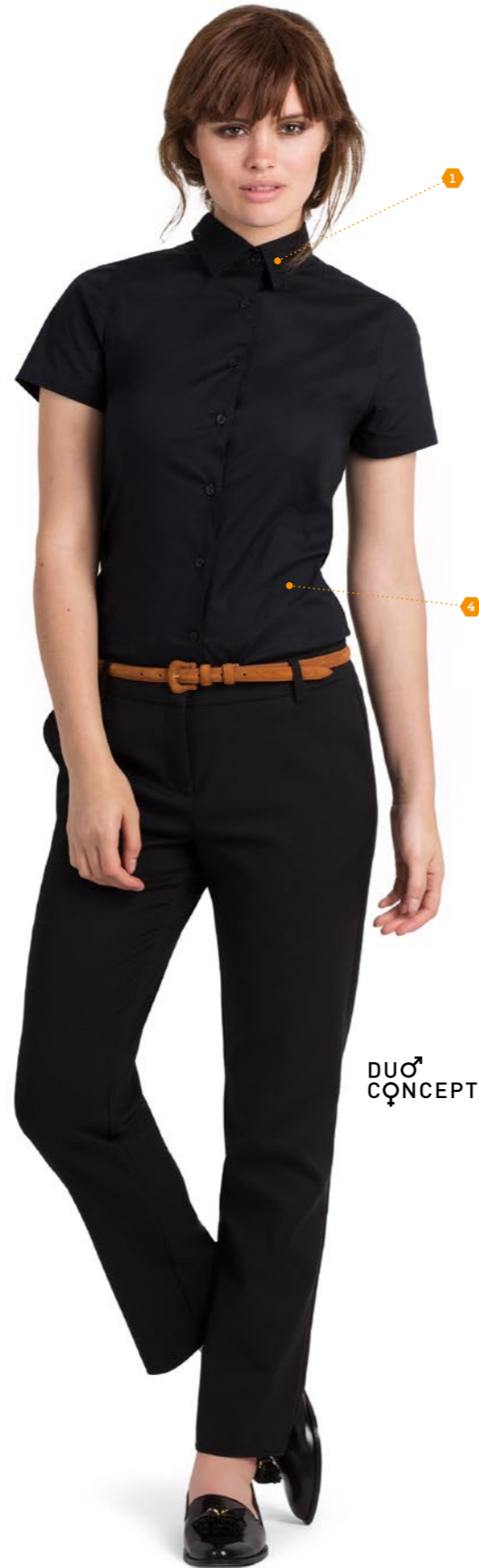
→ **POPLIN COTTON STRETCH FABRIC**

97% combed cotton - 3% elastane  
135 g/m<sup>2</sup>  
XS - S - M - L - XL - XXL - XXXL - 4XL  
1 pc/pack & 10 pcs/carton  
🧺 ⚡ 🕒 📏 🇵🇷

**FITTED** **STRETCH**



- 
1. Soft feminine collar
  2. Cross stitched mother-of-pearl effect buttons
  3. Folded sleeve hem
  4. Darts at bustline & back panel for a feminine shape
  5. Horizontal last buttonhole
- Also: Stretch poplin



DUO  
CONCEPT

SM P22  
**B&C Black Tie SSL /men**

→ **POPLIN COTTON STRETCH FABRIC**

97% combed cotton - 3% elastane  
135 g/m<sup>2</sup>  
Size S - M - L - XL - XXL - XXXL - 4XL  
Collar 37/38 39/40 41/42 43/44 45/46 47/48 49/50 cm  
14,5/15 15,5 16/16,5 17/17,5 18 18,5/19 19,5 ins  
1 pc/pack & 10 pcs/carton  
🧺 ⚡ 🕒 📏 🇵🇷

**MEDIUM FIT** **STRETCH**



- 
1. Cut-away collar
  2. Cross stitched mother-of-pearl effect buttons
  3. Folded sleeve hem
  4. Short modern back yoke
  5. Inside lap seams for perfect finish
  6. Horizontal last buttonhole
  7. Square-shaped bottom hem side reinforcement
  8. Curved bottom hem – shorter length – can be worn untucked
- Also: Stretch poplin  
Darts at back panel



DUO  
CONCEPT



THE SHIRT CULTURE  
BE INSPIRED

—————  
**B&C SHARP LINE**

# IN- AND OUTDOOR JOBS APPROVED

100% COMBED COTTON

The 100% cotton composition of the **B&C Sharp** shirt does not compromise its durability - **its secret: a twill fabric construction.** Comfortable and durable, this line is your best choice whether **your team works in- or outdoors.**

## Fabric benefits

EXTRA RESISTANCE  
THANKS TO TWILL FABRIC

SLIGHTLY WARMER SUITING  
IN- & OUTDOOR ACTIVITIES

Made of **100% combed cotton**, the durability of the twill lies in its tight weave construction which makes it **highly resistant**. This fabric has a diagonal weave, which gives a **rich texture** to this shirt without sacrificing **comfort**. Twill gives a crisp look, is **easy to iron** and is **resistant to wrinkles**.

Its **peached soft-to-touch finish** adds softness and comfort to the B&C Sharp shirts.

## Why choose B&C Sharp?

- > If you like a **softer, heavier fabric**, twill fabric is the best choice. This slightly warmer and less likely to crease fabric is **perfect** for demanding jobs, whether your team is **performing outside or inside**.
- > Thanks to its twill structure, B&C Sharp shirts are **made to meet the needs of high demanding jobs**. Drivers, architects, foremen, warehouse workers or mass retail staff, your employees will have the appropriate, and always impeccable, uniform for both outside positions or high friction conditions.
- > B&C Sharp shirts are suitable for **formal and informal occasions**.

### TWILL

100% COMBED COTTON WITH ADDED  
PEACHED SOFT-TO-TOUCH FINISH  
130 G/M<sup>2</sup>  
WASHABLE AT 50°C



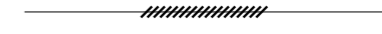
**LARGE SIZE RANGE  
FROM XS TO 4XL.**

Available in **DUO** styles,  
both in long and short  
sleeved versions.

“Being fit will keep you  
mentally sharp”

BRIAN CLOUGH - ATHLETE

# B&C SHARP, A STRONG BUSINESS PARTNER



BE INSPIRED

Taking corporate wear to a new level of **outstanding service** with **B&C Sharp** and its highly **resistant twill fabric**. With the high-end quality manufacturing, **unbeatable comfort** and up-to-date cut, it is the perfect partner for any **demanding jobs** whether your employees perform **indoor or outdoor**.

SHIRTS

SW T83  
**B&C Sharp LSL /women**

→ **TWILL FABRIC**

100% combed cotton  
130 g/m<sup>2</sup>  
XS - S - M - L - XL - XXL - XXXL - 4XL  
1 pc/pack & 10 pcs/carton  
🧺 ⚡ 🔄 📏 🇵🇷

**ADJUSTED FIT**



- 
- Soft feminine collar
  - Cross stitched mother-of-pearl effect buttons
  - 2-button adjustable cuffs
    - Angular cuffs & thin square-shaped gauntlets
    - Additional cufflink buttonholes
  - Darts at bustline & back panel for a feminine shape
  - Horizontal last buttonhole
- Also: Twill 100% cotton

DU♂  
CŦCEPT



B&C Sharp,  
Perfect in- and  
outdoor

SM T81  
**B&C Sharp LSL /men**

→ **TWILL FABRIC**

100% combed cotton  
130 g/m<sup>2</sup>  
Size S - M - L - XL - XXL - XXXL - 4XL  
Collar 37/38 39/40 41/42 43/44 45/46 47/48 49/50 cm  
14,5/15 15,5 16/16,5 17/17,5 18 18,5/19 19,5 ins  
1 pc/pack & 10 pcs/carton  
🧺 ⚡ 🔄 📏 🇵🇷

**REGULAR FIT**



- 
- Semi cut-away collar
  - Cross stitched mother-of-pearl effect buttons
  - 2-button adjustable cuffs
    - Angular cuffs & square-shaped gauntlets
    - Additional cufflink buttonholes
  - The exclusive B&C Tie-Fix®
  - Left chest pocket
  - Back yoke with 2 overstitched side pleats
  - Inside lap seams for perfect finish
  - Horizontal last buttonhole
  - Square-shaped bottom hem reinforcement
- Also: Curved bottom hem  
Twill 100% cotton

DU♂  
CŦCEPT



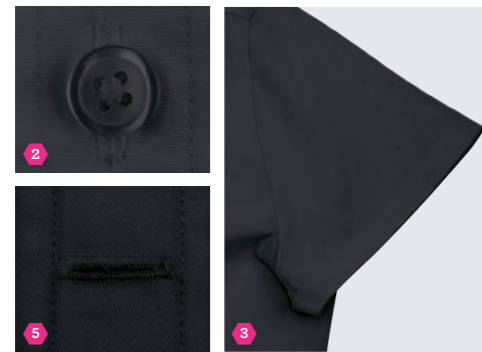


SW T84  
**B&C Sharp SSL /women**

→ **TWILL FABRIC**

100% combed cotton  
130 g/m<sup>2</sup>  
XS - S - M - L - XL - XXL - XXXL - 4XL  
1 pc/pack & 10 pcs/carton  
🧺 ⚡ 🔄 📏 📦

**ADJUSTED FIT**



- 
1. Soft feminine collar
  2. Cross stitched mother-of-pearl effect buttons
  3. Folded sleeve hem
  4. Darts at bustline & back panel for a feminine shape
  5. Horizontal last buttonhole
- Also: Twill 100% cotton



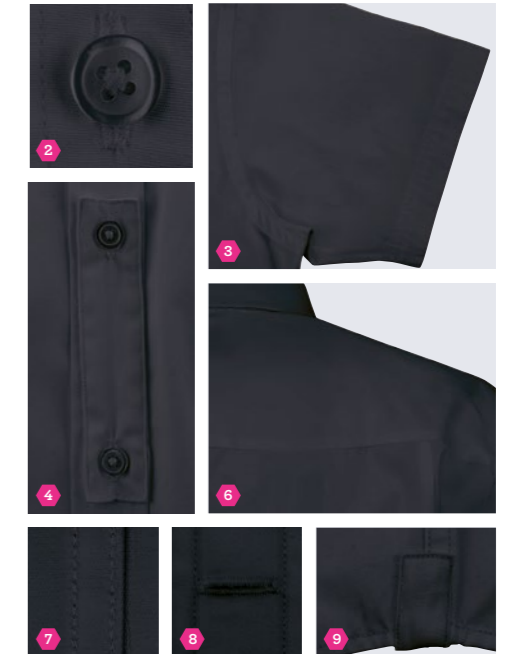
DUO  
CONCEPT

SM T82  
**B&C Sharp SSL /men**

→ **TWILL FABRIC**

100% combed cotton  
130 g/m<sup>2</sup>  
Size S - M - L - XL - XXL - XXXL - 4XL  
Collar 37/38 39/40 41/42 43/44 45/46 47/48 49/50 cm  
14,5/15 15,5 16/16,5 17/17,5 18 18,5/19 19,5 ins  
1 pc/pack & 10 pcs/carton  
🧺 ⚡ 🔄 📏 📦

**REGULAR FIT**



- 
1. Semi cut-away collar
  2. Cross stitched mother-of-pearl effect buttons
  3. Folded sleeve hem with double overstitch
  4. The exclusive B&C Tie-Fix®
  5. Left chest pocket
  6. Back yoke with 2 overstitched side pleats
  7. Inside lap seams for perfect finish
  8. Horizontal last buttonhole
  9. Square-shaped bottom hem reinforcement
- Also: Curved bottom hem  
Twill 100% cotton



DUO  
CONCEPT



**THE GRAPHICAL LINE**

FASHION, STYLE AND ATTITUDE DEFINE THESE TAILORED SHIRTS, WHICH COMBINE A PERFECT CUT WITH A 100% COTTON POPLIN STRETCH FABRIC TO GUARANTEE A PROFESSIONAL LOOK WITHOUT COMPROMISING ON COMFORT FOR THE WEARER.

SM 580  
**B&C London**

→ **POPLIN COTTON STRETCH FABRIC**

97% combed cotton - 3% elastane  
135 g/m<sup>2</sup>  
S - M - L - XL - XXL  
1 pc/pack & 20 pcs/carton

MEDIUM FIT



SW 520  
**B&C Milano /women**

→ **POPLIN COTTON STRETCH FABRIC**

97% combed cotton - 3% elastane  
135 g/m<sup>2</sup>  
XS - S - M - L - XL - XXL  
1 pc/pack & 20 pcs/carton

MEDIUM FIT



DUO  
CONCEPT

**B&C DNM**  
A DENIM VISION OF B&C



DUO  
CONCEPT

SM D85  
**B&C DNM Vision /men**

→ **DENIM TWILL**

100% cotton  
Denim (6.5 OZ) | Garment wash  
S - M - L - XL - XXL  
1 pc/pack & 20 pcs/carton

MEDIUM FIT



SW D86  
**B&C DNM Vision /w.**

→ **DENIM TWILL**

100% cotton  
Denim (6.5 OZ) | Garment wash  
XS - S - M - L - XL - XXL  
1 pc/pack & 20 pcs/carton

FITTED



**HIM**  
1. ANTIQUE BRASS METALLIC BUTTON ON THE LEFT GAUNTLET  
2. REVERSE DENIM SIDE REINFORCEMENTS

**HER**  
1. ANTIQUE BRASS METALLIC BUTTON ON THE LEFT GAUNTLET  
2. REVERSE DENIM SIDE GUSSET